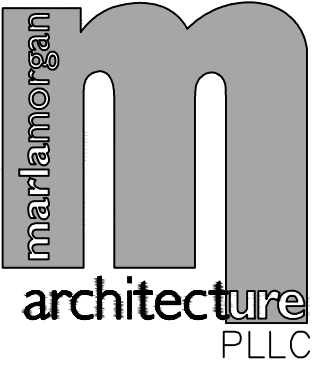


**PLAN NOTES:**

- 1 TYPICAL BALL TYPE ISOLATION VALVE FOR EACH SUITE SPACE LOCATED NEAR CEILING OF MECH. ROOM IN ACCESSIBLE LOCATION.
- 2 TYPICAL ISOLATION BALL VALVE FOR EXTERIOR HOSE BIBB. LOCATE ABOVE ACCESSIBLE CEILING.
- 3 DROP 1/2" CM AND 1/2" HM DOWN IN INTERIOR WALL AND RUN WATER LINES UNDER COUNTER TO SERVE SINK / LAVATORY FAUCET. DO NOT RUN WATER PIPING IN EXTERIOR WALL STUD SPACE.
- 4 SEE CIVIL SITE PLAN FOR CONTINUATION OF 1-1/2" DOMESTIC CM MAIN.
- 5 RISE 1-1/2" CM MAIN UP THRU SLAB INTO MECH. ROOM TO WATER PRESSURE REDUCING VALVE ASSEMBLY. SEE DETAIL ON SHEET P-4.
- 6 1" CAPPED LAMB SPRINKLER LINE.
- 7 1" CM LINE UP IN WALL ABOVE TO SERVE SUITE #3 ABOVE. SEE SHEET P-3 FOR CONTINUATION OF PIPING.
- 8 GAS METER BY LOCAL GAS COMPANY SIZED FOR 545,000 BTU AT 2 PSI DELIVERY PRESSURE.
- 9 GAS METER BY LOCAL GAS COMPANY SIZED FOR 65,000 BTU AT 2 PSI DELIVERY PRESSURE.
- 10 GAS METER BY LOCAL GAS COMPANY SIZED FOR 150,000 BTU AT 2 PSI DELIVERY PRESSURE.
- 11 INSTALL 2 PSI TO OZ. REGULATOR SIZED FOR 380,000 BTU EMERG. GENERATOR ON 3/4" GAS LINE. CONNECT 3/4" (OZ.) GAS LINE TO GENERATOR COMPLETE WITH SHUT-OFF VALVE, DIRT LEG AND FLEXIBLE CONNECTION. SEE DETAIL ON SHEET P-4.

LICENSED ARCHITECT  
AR-2650  
MARLA R. MORGAN  
STATE OF IDAHO



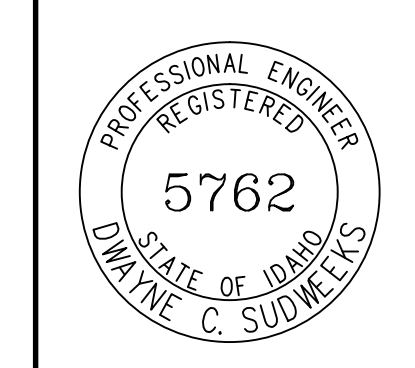
MARLA MORGAN, Architect  
Ph: 208.270.2244  
E-MAIL: morganmrm@cableone.net

OWNER: **Dr. Deirdre Conway**  
**IDAHO FERTILITY CENTER**  
535 West Sunnyside Road Idaho Falls, ID 83402

SHEET CONTENTS  
**FIRST FLOOR WATER & GAS PIPING FLOOR PLAN**

REVISIONS	No	DATE	DESCRIPTION

ORIGINAL DRAWING SIGNED BY: DWAYNE C. SUDWEEKS  
DATE ORIGINAL SIGNED: FEB. 26, 2019  
ORIGINAL ON FILE AT ENGINEERED SYSTEMS ASSOCIATES  
1355 EAST CENTER, POCATELLO, IDAHO 83201



**Engineered Systems Associates**  
1355 EAST CENTER  
POCATELLO, IDAHO 83201  
PHONE: (208) 233-0501  
FAX: (208) 233-0529  
EMAIL: eso@engsystems.com  
ESA JOB NUMBER: 18097

**FIRST FLOOR WATER & GAS PIPING FLOOR PLAN**  
SCALE: 1/4" = 1'-0"

